



**UNIT SUPPLY**  
**CARGO RACK**  
READY TO DEPLOY



**Rapistak products are  
proudly made in the USA.**

**Our headquarters is in  
Buffalo, New York.**



# RAPISTAK

Our products are sold around the globe to multi-national clients.

Some of our customers include:



U.S. AIR FORCE



# Ready to Deploy

Staging deployment ready materials on the floor or ground wastes valuable space and significantly reduces rapid deployment capabilities.

Unit Supply Cargo Rack high-density storage easily uses up to 50% less space and provides immediate access to all materials for fast, efficient deployment.

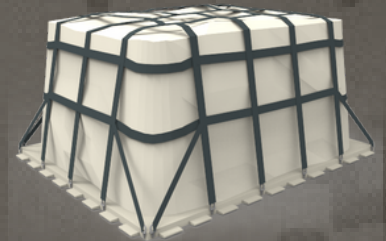


**UNIT SUPPLY**  
**CARGO RACK**  
READY TO DEPLOY



# More Space. Less Waste.

With 2 and 3 level designs, you can maximize your storage space with a minimum footprint.



463L Pallets



ISU-90 containers

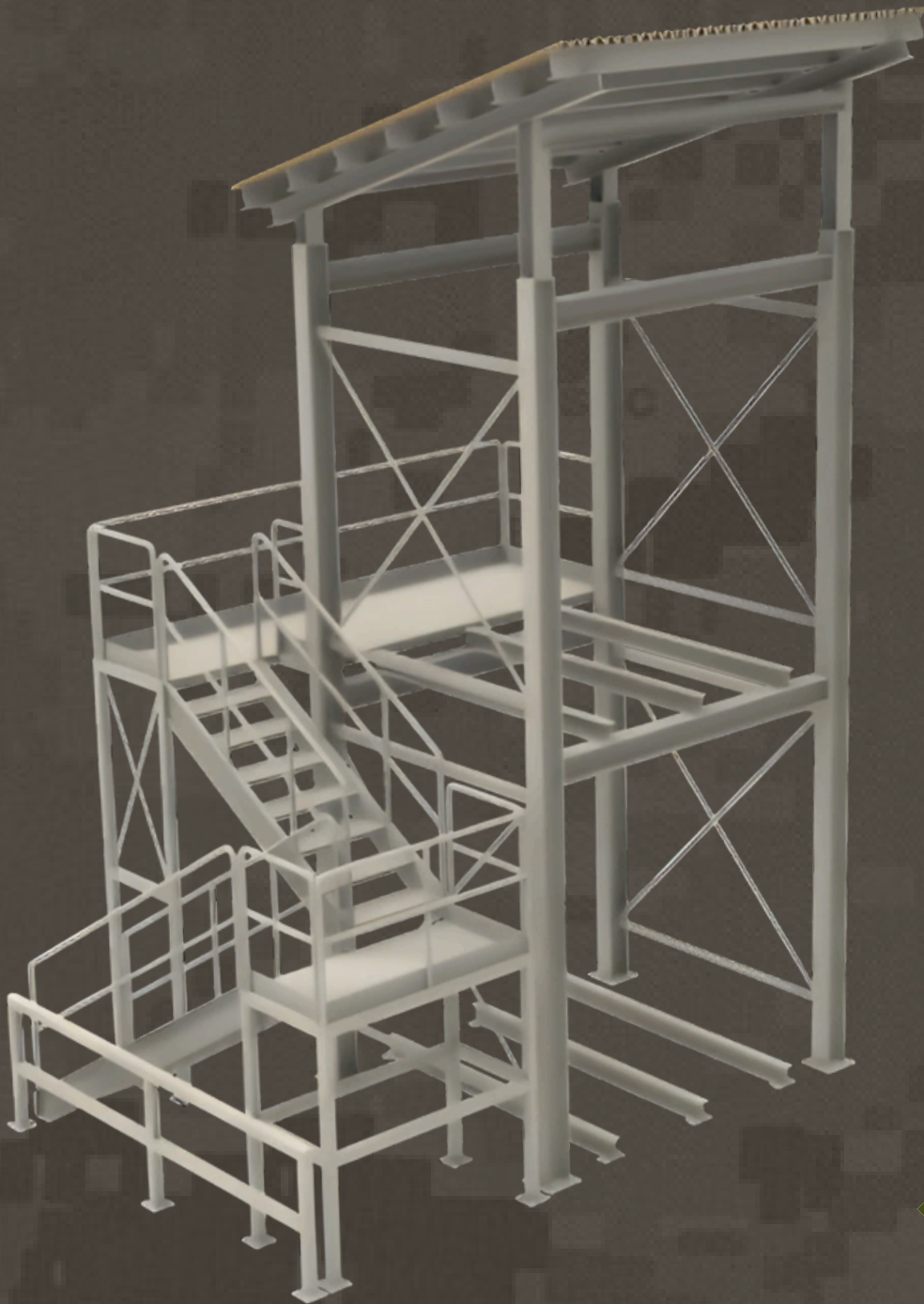


Bicon / Tricon



**UNIT SUPPLY  
CARGO RACK**  
READY TO DEPLOY

# Flexible Configurations



Exterior-grade materials ensure a long life for your system.



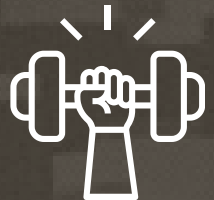
Available stairs and walkways provide instant, anytime access when readiness and deployment are required.



Roof and sidewall options protect your precious cargo from the elements.



Capacities up to 26,500 lbs per level.



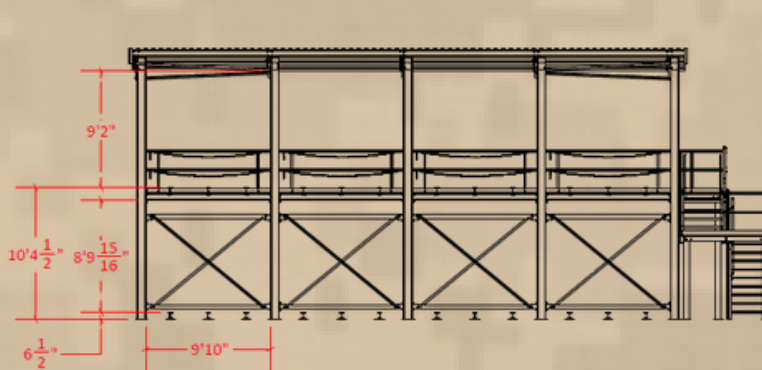
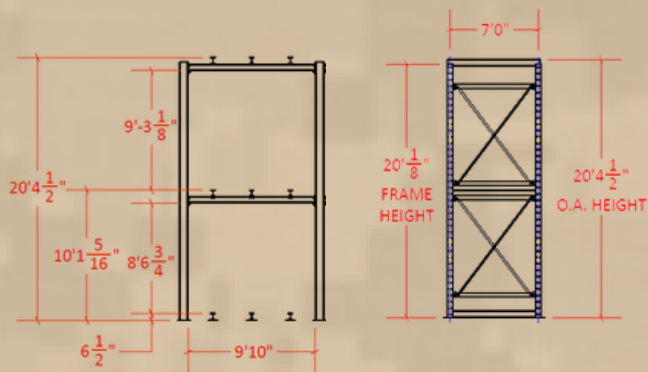
**UNIT SUPPLY**  
**CARGO RACK**  
READY TO DEPLOY

# Dimensions and Specifications



ISU90, 463L

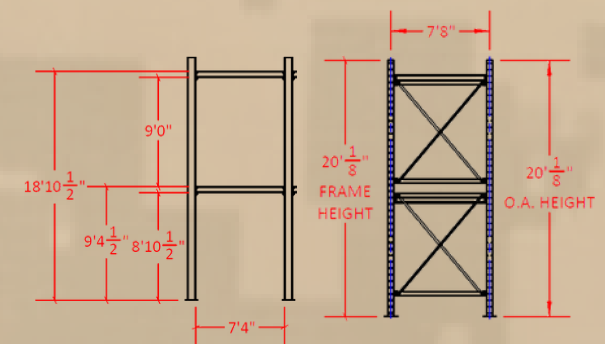
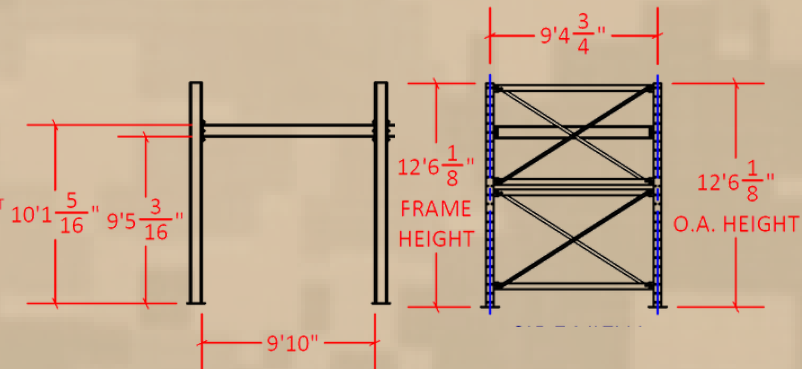
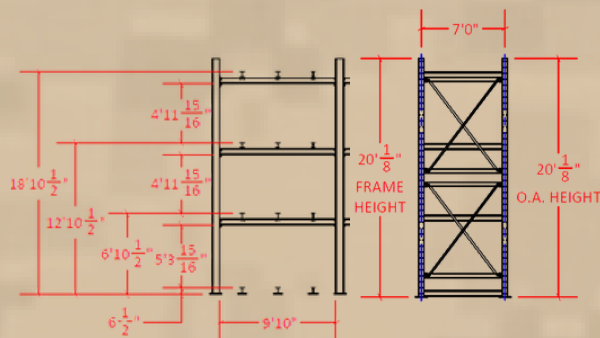
ISU90, 463L with Roof and Walkway



463L

Bicon

Tricon



# Design Specifications

Unit Supply Cargo Rack is designed and manufactured in the U.S.A utilizing the standards below:

## International Building Code 2021

**ANSI MH16.1: 2023** - Rack Manufacturers Institute (RMI) – Specification for the Design, Testing and Utilization of Industrial Steel Storage Racks

**ANSI/AISC 360-16** – American Institute of Steel Construction - Specification for Structural Steel Buildings

**ACI 318-14** – American Concrete Institute – Building Code Requirements for Structural Concrete – Chapter 17 (Anchoring to Concrete)

**ASCE/SEI 7-16** – American Society of Civil Engineers & Structural Engineering Institute – Minimum Design Loads for Buildings and Other Structures.

## Regarding structural steel used:

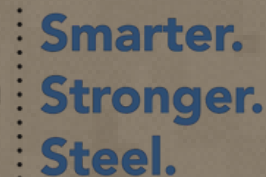
**A992** (uprights, load beams, walkway supports)

**A36/A572** (channel roof support, angle bracing)

## Hot Dip Galvenizing:

ASTM A-123

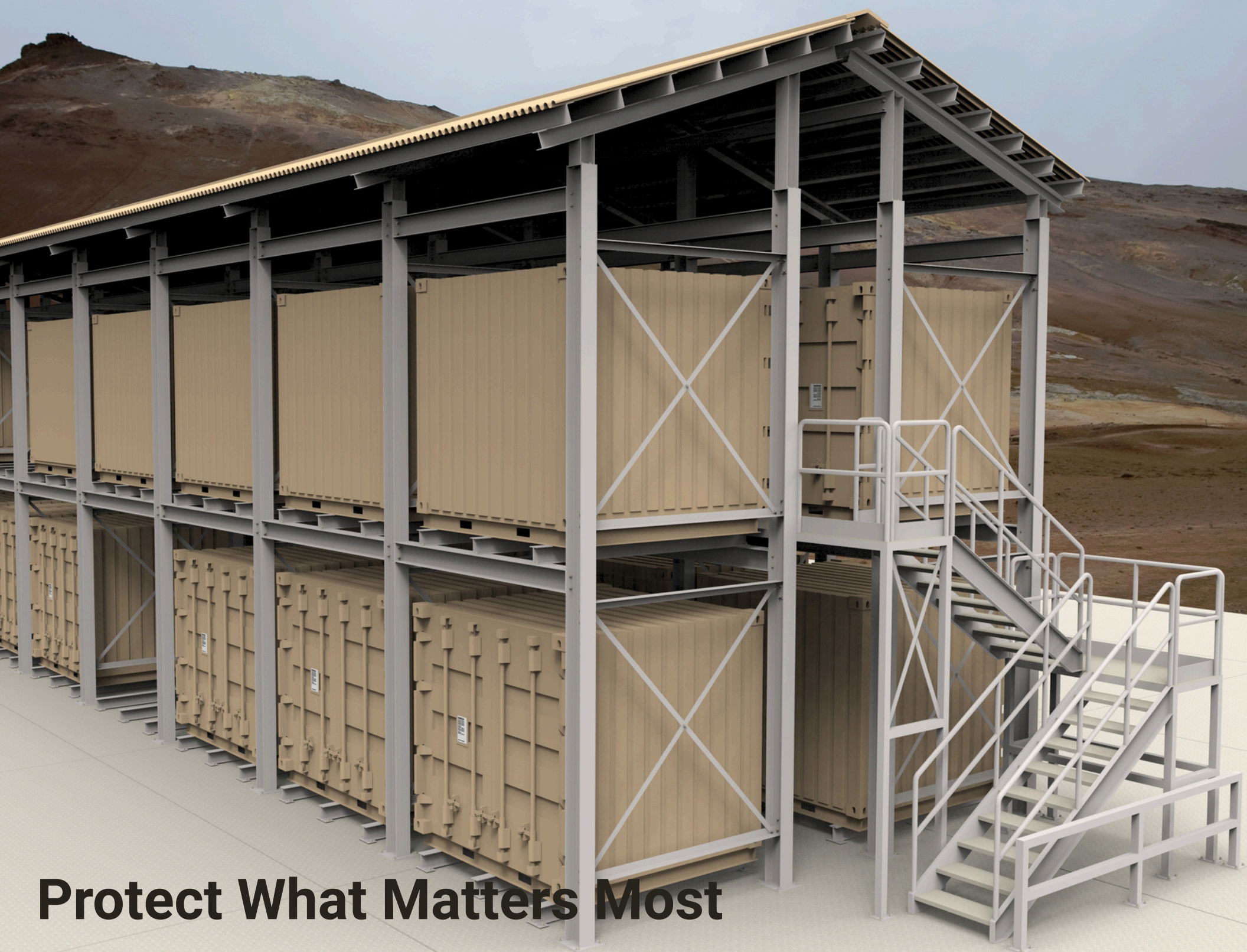
AASHTO M111



American Concrete Institute  
*Always advancing*



ADVANCING STANDARDS  
TRANSFORMING MARKETS



**Protect What Matters Most**



# CONTACT US

- 804-798-3701 or 757-538-3320
- [info@spacesaverva.com](mailto:info@spacesaverva.com)
- <https://www.spacesaverva.com/>